

LS-B10/LS-B10W & RD-100W/LS-B100

Laser Receivers & Wireless Remote Display



Low-cost indicate solutions

- SMALL, LIGHTWEIGHT DESIGN
- LS-B10/LS-B10W: 270° DETECTION
LS-B100: 360° DETECTION
- RUGGED, WATERPROOF DESIGN
- WIRELESS SUPPORT & CAN SUPPORT
- BRIGHT INDICATOR LIGHTS

LS-B10 Series and RD-100W

The LS-B10 Series are low-cost indicate solutions that were designed with two purposes in mind; to help move dirt, and grow with your company. These versatile receivers can be mounted on a array of machines, while their small, lightweight design allows them to be attached to a rod for grade checking applications as well.



To increase versatility, an RD-100W (remote display unit) can be mounted in the cab allowing the operator to view the same information that is displayed on the LS-B10W via wireless connection.

Integrated CAN support in the LS-B10W means that this system is provided with the flexibility to be used with future indicate and automatic machine control systems.

Specifications

LS-B10 and LS-B10W Receivers

Vertical Detecting Range	4.72" (120mm)
Horizontal Detecting Range	270°
On-grade Zone (LED)	0.08", 0.24", 0.47", 1.18" 2mm, 6mm, 12mm, 30mm
Grade LED Patterns	5 grade, 2 lost beam, 1 low battery, 1 level alert
LED Grade Indicators	Red (▲), Green (→), Red (▼)
LCD Grade Indicators	5 channels on-grade + 10 gradual triangles (±5)
Wireless	LS-B10W: Yes / LS-B10: No
Ports	LS-B10W: CAN, Wireless communication LS-B10: N/A
Operating Time	LS-B10W: 20h / LS-B10: 100h
Weight	Less than 500g
Size	4.53 x 1.57 x 7.09" (w/magnet) 115 x 40 x 180mm (w/magnet)

RD-100W (Wireless Remote Display for LS-B10W)

Wireless Communication	20m
Range	(may vary depending on obstacles between the two instruments as well as other communications)
Power Source	AA-size dry cells 3pcs.
Continuous Operating Time (+20°C/+68°F)	Approximately 40 hours (Using alkaline manganese dry cells)
Operating Temperature	-20°C to + 50°C (-4°F to +122°F)
Water Proof	IP66 (Based on the standard IEC60529)
Dimensions (W/D/H)	110x36x176(mm) (4.3"x1.4"x6.9")
Weight (Without cells)	0.5kg (1.2lbs)



Topcon Positioning Systems, Inc.

7400 National Drive
Livermore, CA 94550
www.topconpositioning.com

Specifications subject to change without notice

©2009 Topcon Corporation All rights reserved.

P/N: 7010-2040 Rev. A Printed in U.S.A. 11/09

LS-B100

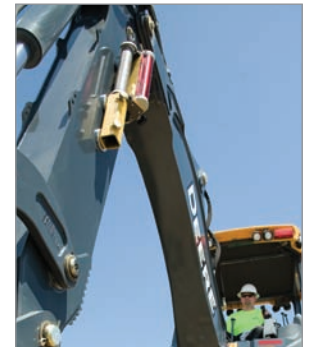
Looking for a great value on a Laser Sensor for your earth moving machines?

Check out the LS-B100. Fast to set up and easy to use, this affordable depth control sensor can be mounted to your equipment and working within minutes. This unit is packed full of features such as an Accuracy Mode and Battery Life Indicator. Plus, it has a Power Save/Auto Cut Off function to save your battery life.

The LS-B100 is a low-cost grade indicate solution that makes any operator more productive.



Universal L-Bar Mount



Magnetic Excavator Mount
Part Number 90901601

Specifications

LS-B100 Receiver

Detective Range	175mm (6.6in)
Detective Angle	360°
Detective Precision	Mode1: ±3mm (0.009ft) Mode2: ±6mm (0.019ft) Mode3: ±15mm (0.049ft) Mode4: ±30mm (0.098ft)
Detectable Laser Wave Length	633 to 785nm
Laser Detecting Range (diameter)	800m (2625ft) (using RL-100 1S/2S)
Internal Battery	C-size dry cells 4pcs. Battery pack BT-68Q (sold separately)
External Power Supply	DC 10V to 30V
Continuous Operating Time (+20°C/+68°F)	Approximately 100 hours (Using alkaline manganese dry cells) Approximately 50 hours (Using Battery pack BT-68Q)
Operating Temperature	-20°C to + 50°C (-4°F to +122°F)
Water Proof	IP66 (Based on the standard IEC60529)
Dimensions (W/D/H)	158x166x357 (mm) (6.2"x6.5"x14.0") (With Mechanical Clamp)
Weight (Without cells)	2.0kg (4.4lbs)

Your local Authorized Topcon dealer is: **SYNERGY**
POSITIONING SYSTEMS

3/52 Arrenway Drive, Albany

Auckland, New Zealand Website: www.synergypositioning.co.nz

Free Call: 0800-867-266

Phone: +64-9-476-5151

Fax: +64-9-476-5140 Email: info@synergypositioning.co.nz